



Linden Grove

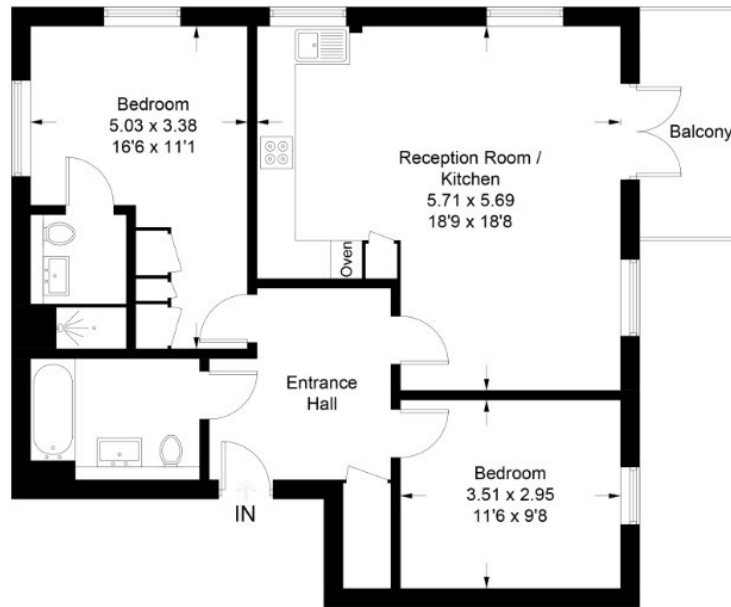
, New Malden KT3 3BW

- STUNNING OPEN PLAN KITCHEN/LIVING ROOM
 - FULLY INTEGRATED KITCHEN
 - FAMILY BATHROOM
 - STORAGE SPACE
- SECOND DOUBLE BEDROOM
- LIFT
- ALLOCATED PARKING
- PRINCIPAL BEDROOM WITH EN-SUITE
- EPC RATING B
- BALCONY

£2,000 PCM

Local Authority Kingston
Council Tax Band C
EPC Rating B

Approximate Gross Internal Area = 73.4 sq m / 790 sq ft



We Are Lettings Ltd RESI Office

G7 Thames House, 63-67 Kingston
Road, New Malden, Surrey, KT3 3PB

Contact

020 8037 5953
admin@wearelettings.co.uk

Agents Note: Whilst every care has been taken to prepare these particulars, they are for guidance purposes only. All measurements are approximate and for general guidance purposes only and whilst every care has been taken to ensure accuracy, they should not be relied upon and potential buyers/tenants are advised to recheck the measurements.

