

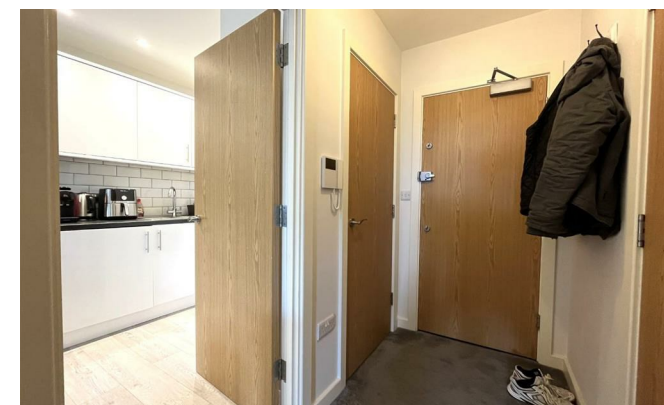


356 West Barnes Lane

, New Malden KT3 6NB

- Excellent location next to Motspur Park Station
- Large double bedroom
- Spacious bathroom
 - Furnished
- Allocated Parking
- New construction 2019
- Open plan Kitchen/Living area
 - Triple glazed
 - Washer Dryer
 - Lift

£1,500 Per Month



Local Authority Merton
Council Tax Band C
EPC Rating E



Total - 39.3 m2, 422.6 ft2
Floorplans are for indicative purposes only

We Are Lettings Ltd RESI Office

G7 Thames House, 63-67 Kingston
Road, New Malden, Surrey, KT3 3PB

Contact

020 8037 5953
admin@wearelettings.co.uk

Agents Note: Whilst every care has been taken to prepare these particulars, they are for guidance purposes only. All measurements are approximate and for general guidance purposes only and whilst every care has been taken to ensure accuracy, they should not be relied upon and potential buyers/tenants are advised to recheck the measurements.

