



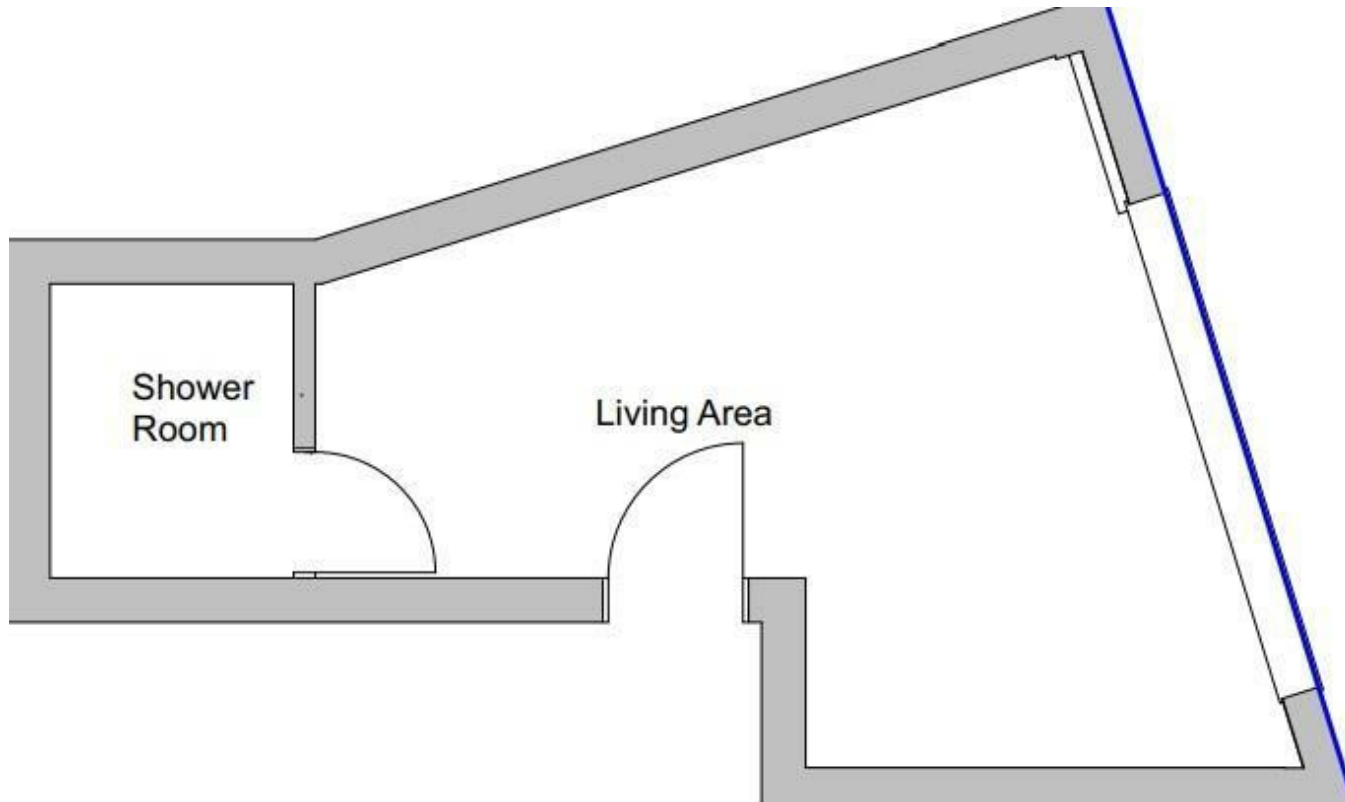
Kingston Road , New Malden KT3 3PB

- BRIGHT STUDIO
- GAS CENTRAL HEATING
- SPACE FOR DOUBLE BED
- FULLY EQUIPPED KITCHEN
- EPC RATING C
- SHOWER ROOM
- SPACE FOR STORAGE AND SOFA

£1,200 PCM



Local Authority Kingston
Council Tax Band B
EPC Rating C



We Are Lettings Ltd RESI Office

G7 Thames House, 63-67 Kingston
Road, New Malden, Surrey, KT3 3PB

Contact

020 8037 5953
admin@wearelettings.co.uk

Agents Note: Whilst every care has been taken to prepare these particulars, they are for guidance purposes only. All measurements are approximate and for general guidance purposes only and whilst every care has been taken to ensure accuracy, they should not be relied upon and potential buyers/tenants are advised to recheck the measurements.