

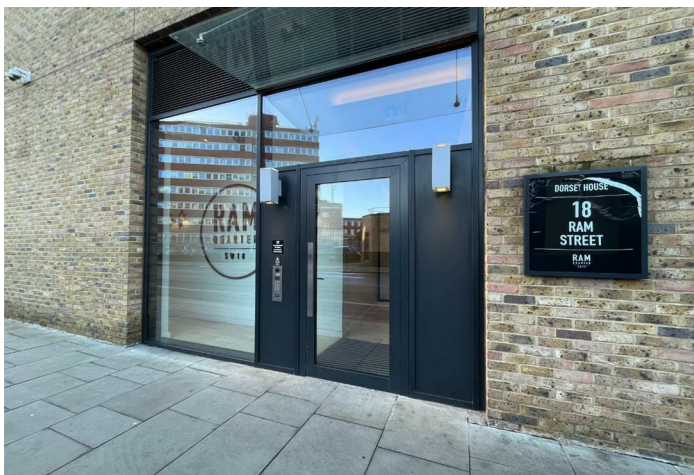


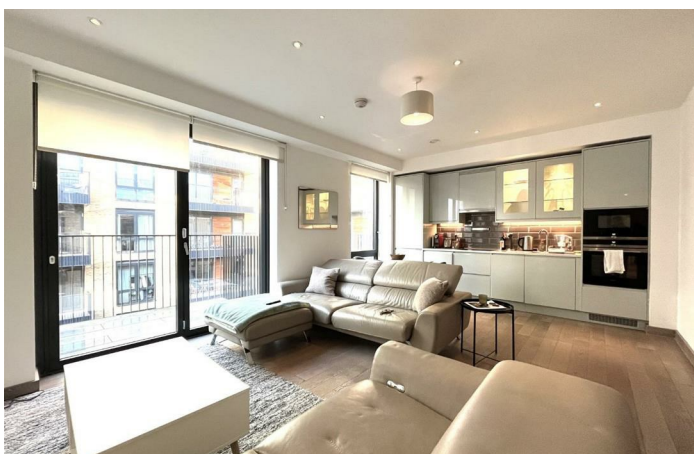
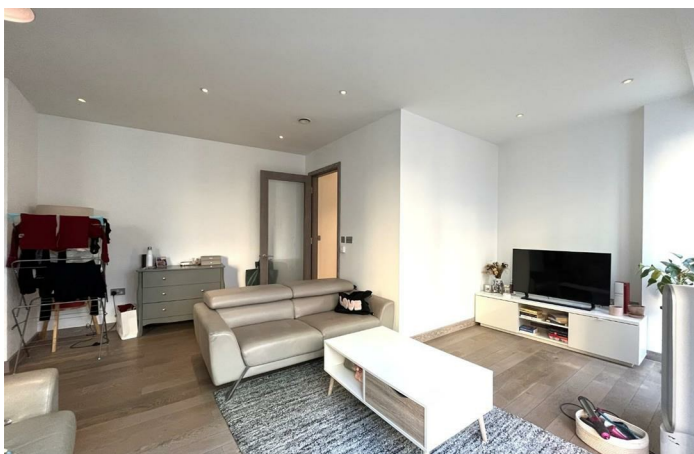
## Ram Quarter

Ram Street, London SW18 1UB

- Large balcony
- 24 hour concierge
- Double bedroom with bespoke wardrobes
- Laundry cupboard
- 5th floor with lift access
- Under floor heating
- Bright open-plan living space

£2,250 Per Calendar Month





## Location

Experience Luxurious Living in the Heart of Wandsworth.

This stunning one-bedroom apartment boasts a prime location within the prestigious Ram Quarter development at Dorset House. Enjoy the epitome of modern living with exceptional finishes and access to an array of on-site amenities.

### Property Highlights:

- Spacious and Bright: Open-plan living area bathed in natural light.
- Modern Kitchen: Equipped with high-spec integrated appliances.
- Luxurious Bedroom: Spacious and comfortable with ample built-in storage.
- Stylish Bathroom: Contemporary design with high-quality fixtures and fittings and integrated storage.
- Private Balcony: Access via bi-fold doors.
- Lift Access: Conveniently reach your floor with ease.
- Prime Location: Situated in the heart of Wandsworth, moments from local shops, restaurants, and transport links.
- Fully Managed by We Are Lettings Limited: Enjoy peace of mind with professional property management.
- Underground parking available by way of a licence agreed with the management company. Please ask for more information.

### Ram Quarter:

**Exclusive Development:** Experience a vibrant community with access to on-site amenities.  
**Unrivalled Convenience:** Located within walking distance of Wandsworth Town Station, offering excellent transport links to central London.  
**Local Amenities:** Enjoy a wide range of shops, restaurants, and bars on your doorstep.

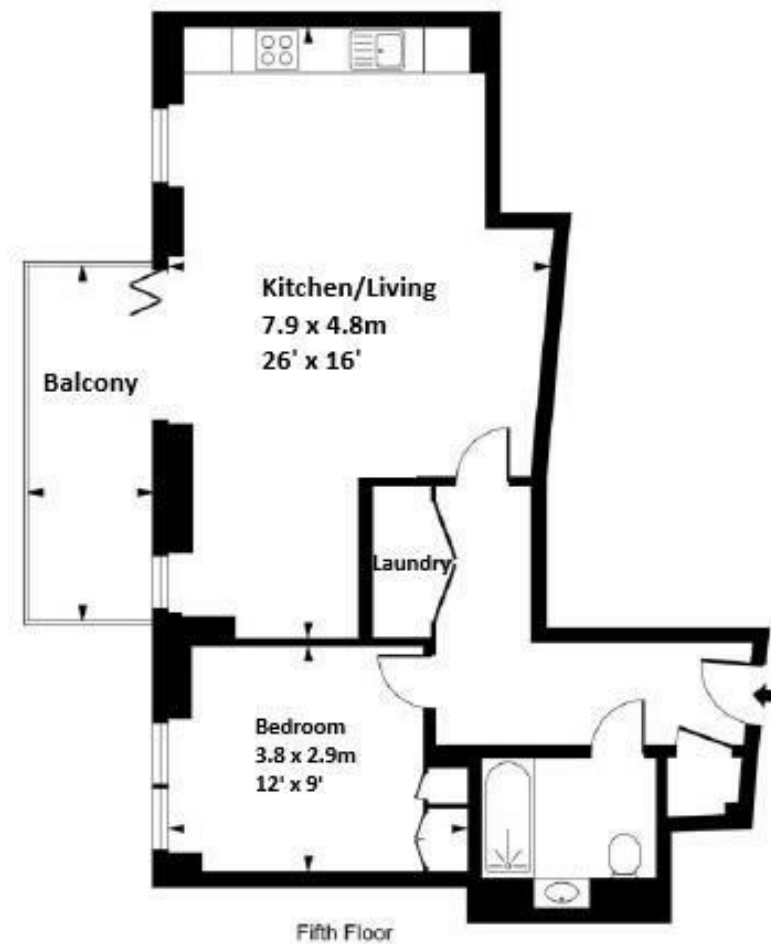
Council - Wandsworth

Council Tax band - D - £961.14 per annum





Local Authority Wandsworth  
Council Tax Band D  
EPC Rating B



Total approximate area 58sq m / 625 sq ft

#### We Are Lettings Ltd RESI Office

G7 Thames House, 63-67 Kingston  
Road, New Malden, Surrey, KT3 3PB

#### Contact

020 8037 5953  
admin@wearelettings.co.uk

Agents Note: Whilst every care has been taken to prepare these particulars, they are for guidance purposes only. All measurements are approximate and for general guidance purposes only and whilst every care has been taken to ensure accuracy, they should not be relied upon and potential buyers/tenants are advised to recheck the measurements.