



Nutfield Road

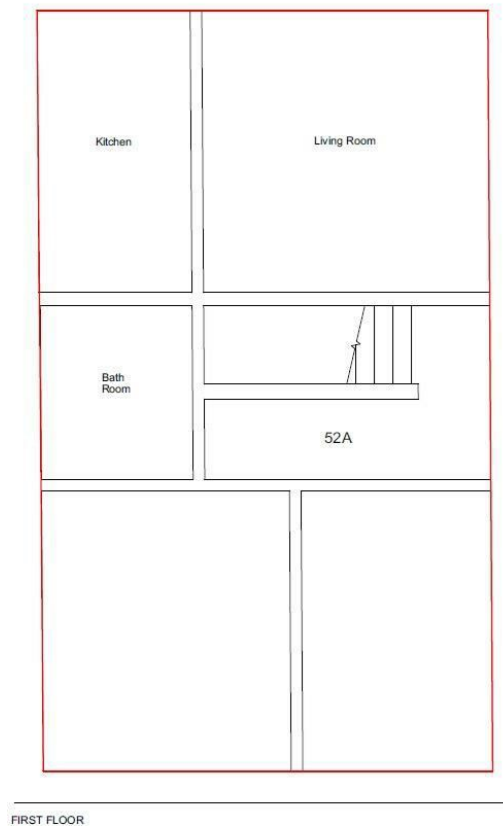
Merstham, Redhill RH1 3EP

- NEW KITCHEN
- NEW BATHROOM
- NEW CARPETS
- NEW HEATING
- PARKING
- PRIVATE GARDEN
- 2 DOUBLE BEDROOMS
- NEW WINDOWS
- GAS CENTRAL HEATING

£1,500



**Local Authority Reigate
and Banstead Borough
Council
Council Tax Band C**



We Are Lettings Ltd RESI Office

G7 Thames House, 63-67 Kingston
Road, New Malden, Surrey, KT3 3PB

Contact

020 8037 5953
admin@wearelettings.co.uk

Agents Note: Whilst every care has been taken to prepare these particulars, they are for guidance purposes only. All measurements are approximate and for general guidance purposes only and whilst every care has been taken to ensure accuracy, they should not be relied upon and potential buyers/tenants are advised to recheck the measurements.

