



## Nutfield Road

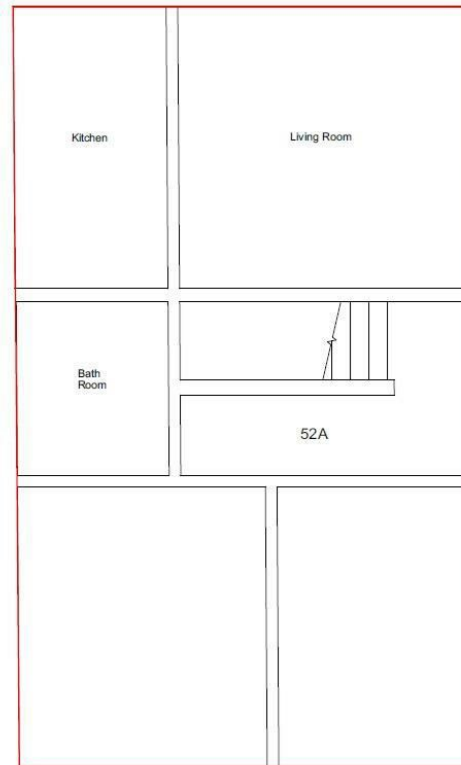
Merstham, Redhill RH1 3EP

- NEW KITCHEN
- NEW BATHROOM
- NEW CARPETS
- NEW HEATING
- PARKING
- PRIVATE GARDEN
- 2 DOUBLE BEDROOMS
- NEW WINDOWS
- GAS CENTRAL HEATING

£1,500



Local Authority Reigate  
and Banstead Borough  
Council  
Council Tax Band C



FIRST FLOOR



**We Are Lettings Ltd RESI Office**

G7 Thames House, 63-67 Kingston  
Road, New Malden, Surrey, KT3 3PB

**Contact**

020 8037 5953  
[admin@wearelettings.co.uk](mailto:admin@wearelettings.co.uk)

Agents Note: Whilst every care has been taken to prepare these particulars, they are for guidance purposes only. All measurements are approximate and for general guidance purposes only and whilst every care has been taken to ensure accuracy, they should not be relied upon and potential buyers/tenants are advised to recheck the measurements.