

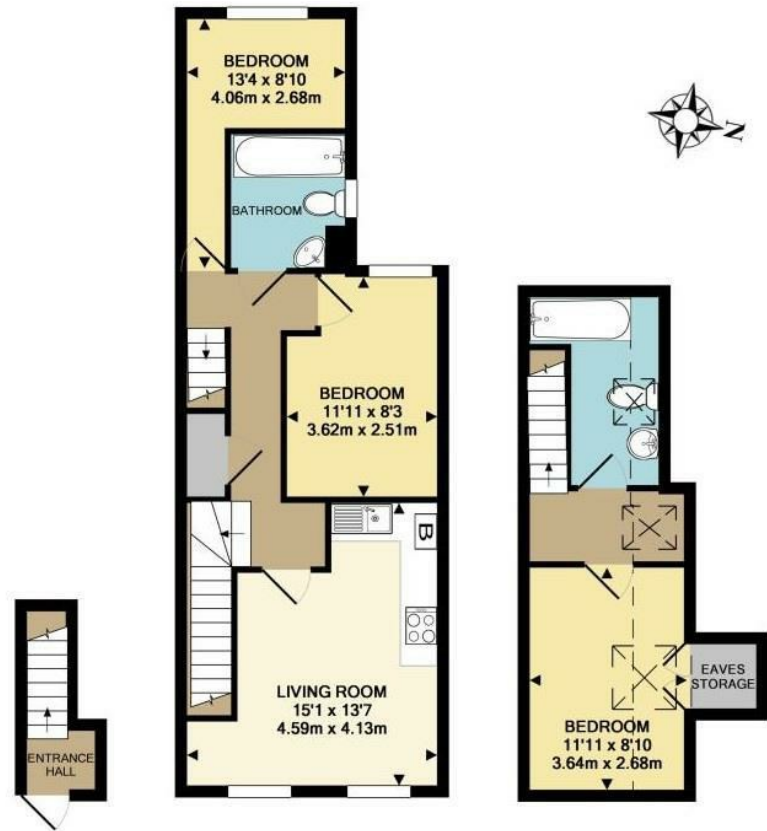
## Nutfield Road

Merstham, Redhill RH1 3EP

- THREE BEDROOMS
- TWO BATHROOMS
- PARKING
- OPEN-PLAN KITCHEN/LIVING
- KITCHEN APPLIANCES INCLUDED
- EPC RATING B

£1,650 PCM

Local Authority Reigate  
and Banstead Borough  
Council  
Council Tax Band C



**We Are Lettings Ltd RESI Office**

G7 Thames House, 63-67 Kingston  
Road, New Malden, Surrey, KT3 3PB

**Contact**

020 8037 5953  
admin@wearelettings.co.uk

Agents Note: Whilst every care has been taken to prepare these particulars, they are for guidance purposes only. All measurements are approximate and for general guidance purposes only and whilst every care has been taken to ensure accuracy, they should not be relied upon and potential buyers/tenants are advised to recheck the measurements.

