



Highbury Drive , Leatherhead KT22 7UT

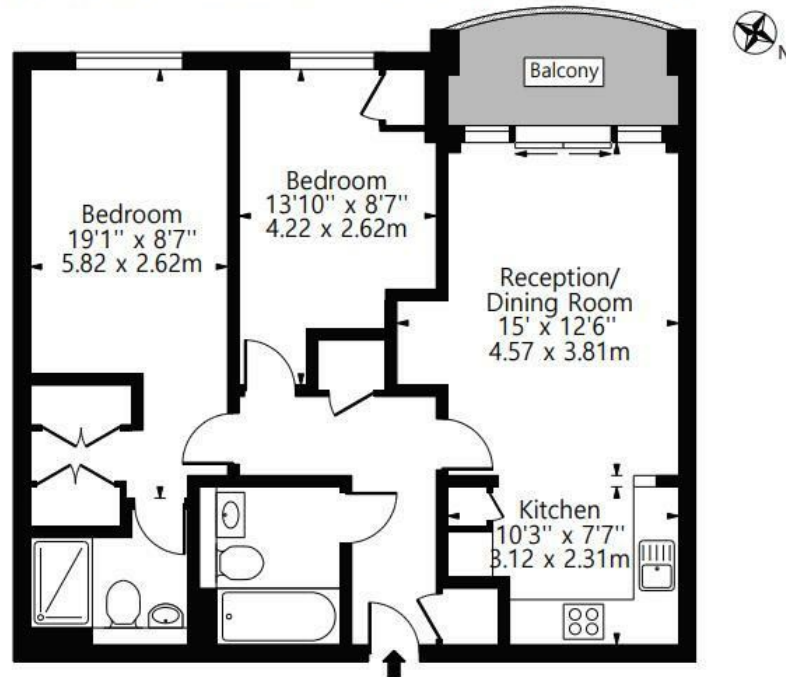
- 2 spacious bedrooms
- 2 modern bathrooms
- Built in storage
- Open-plan Kitchen/Living room
- Balcony
- Parking
- Lift

£1,600 Per Calendar Month



Local Authority Mole
Valley
Council Tax Band D
EPC Rating B

Approx. Gross Internal Area 695 Sq Ft - 64.57 Sq M



First Floor
For Illustration Purposes Only - Not To Scale

We Are Lettings Ltd RES1 Office

G7 Thames House, 63-67 Kingston
Road, New Malden, Surrey, KT3 3PB

Contact

020 8037 5953
admin@wearelettings.co.uk

Agents Note: Whilst every care has been taken to prepare these particulars, they are for guidance purposes only. All measurements are approximate and for general guidance purposes only and whilst every care has been taken to ensure accuracy, they should not be relied upon and potential buyers/tenants are advised to recheck the measurements.

